

jardin  
164,91 m<sup>2</sup>

terrasse  
12,89 m<sup>2</sup>

1 000

1 300

480

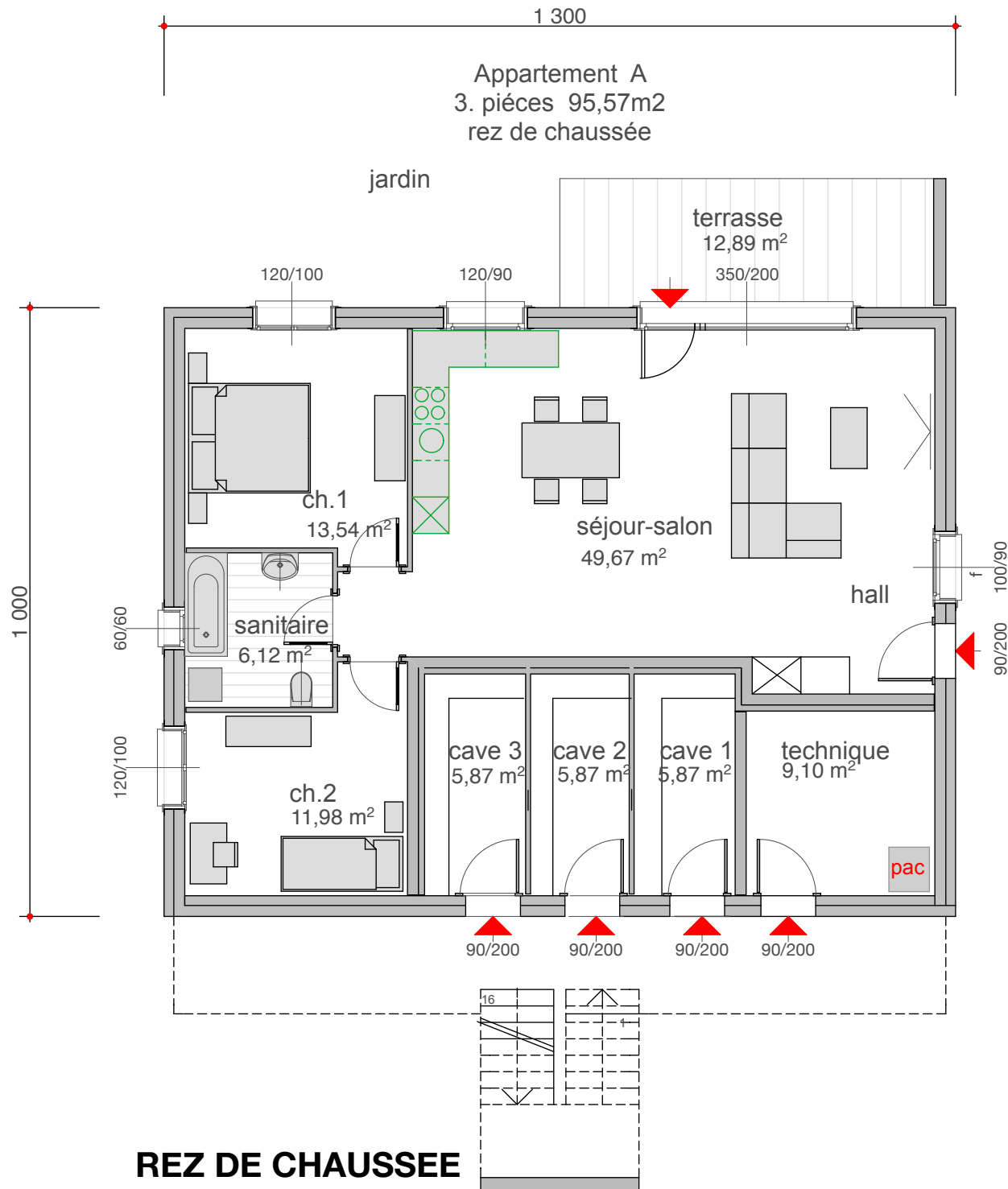
AMENAGEMENT

6278

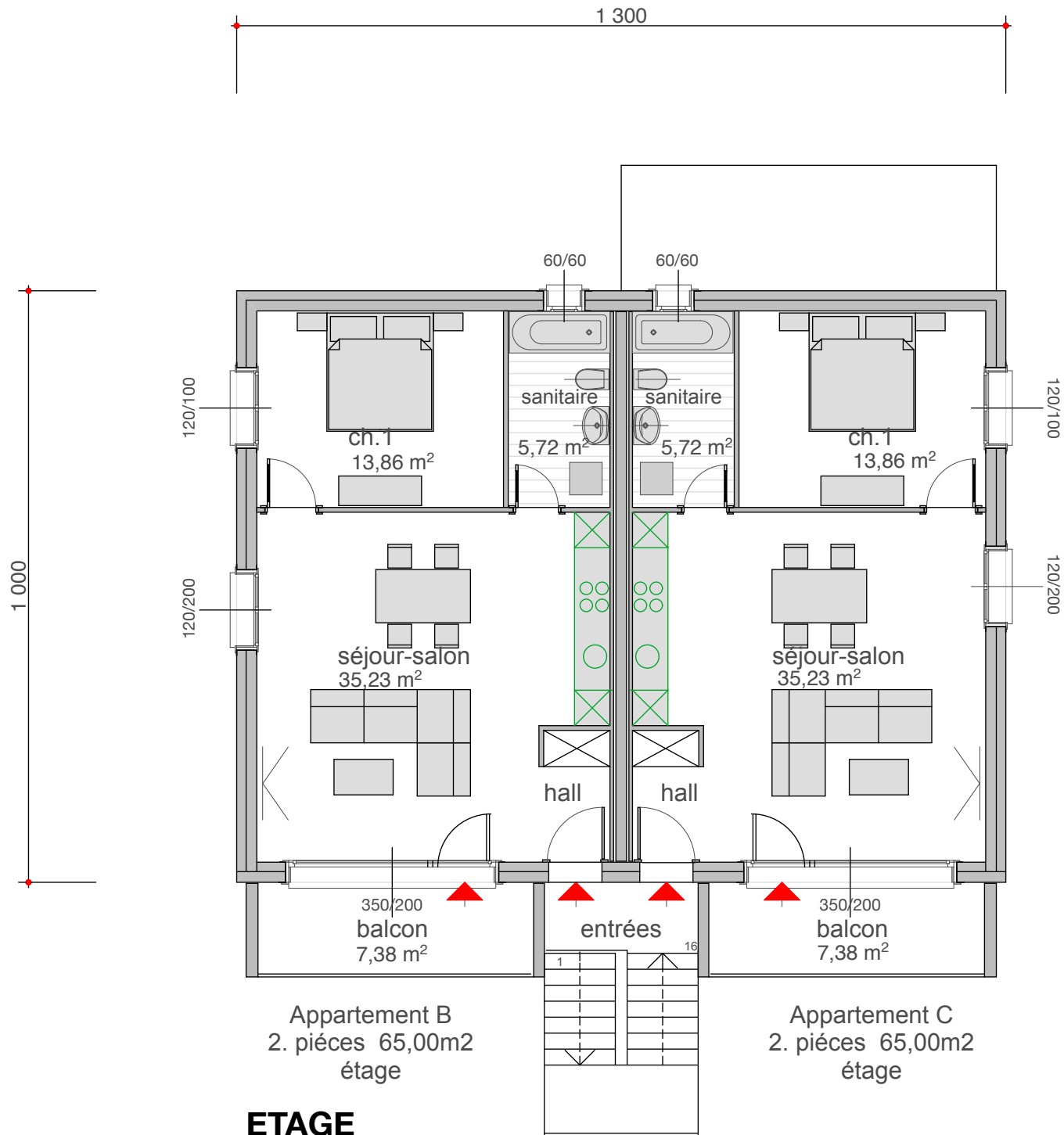
433

servitude de passage

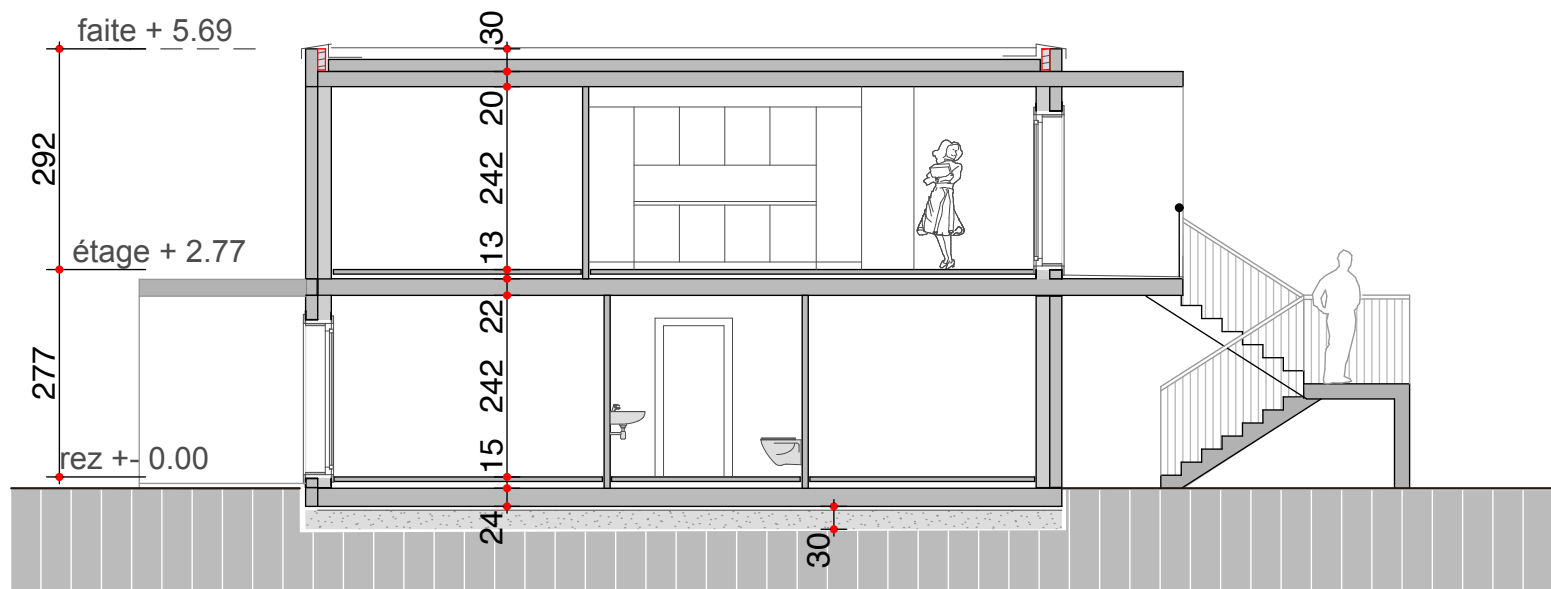
Appartement A  
3. pièces 95,57m<sup>2</sup>  
rez de chaussée



**REZ DE CHAUSSEE**

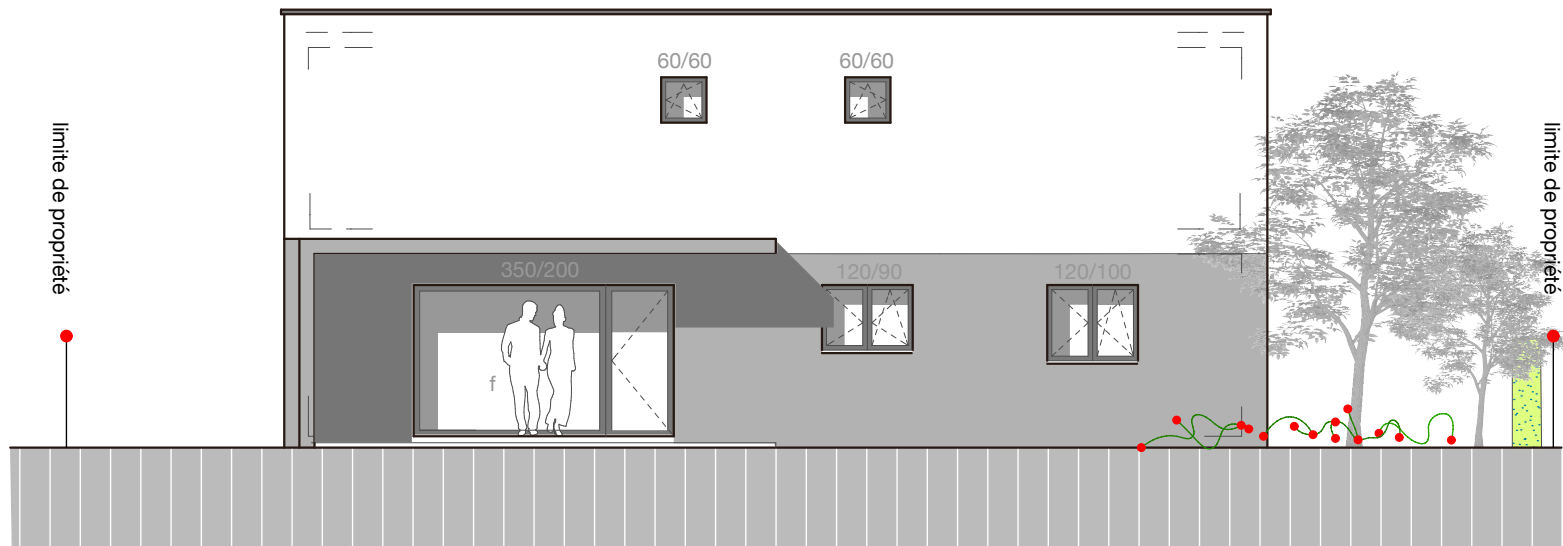


**ETAGE**





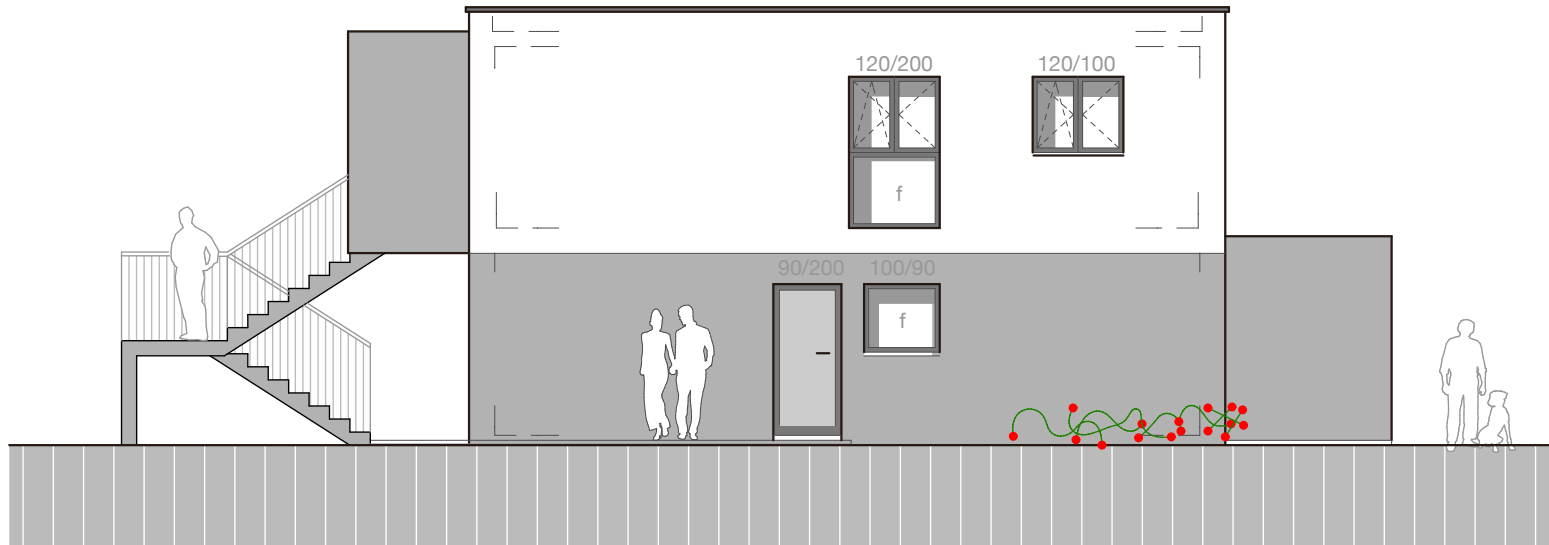
**FACADE S.E.**



**FACADES N.O.**



**FACADE S.O.**



**FACADE N.E.**